

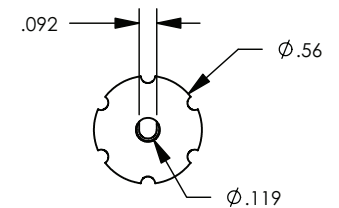
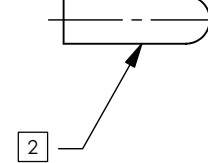
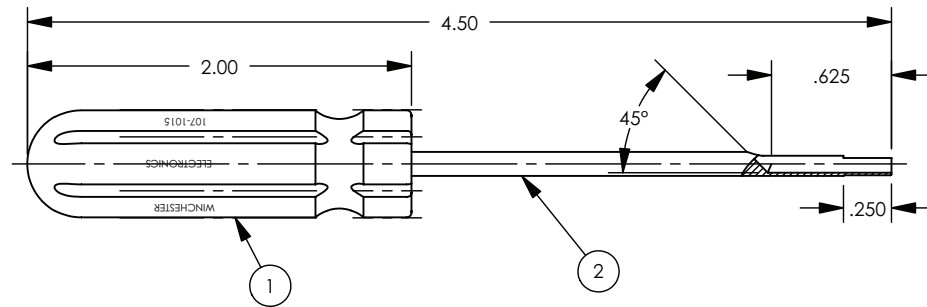
NOTES: UNLESS OTHERWISE SPECIFIED
 1. * DENOTES A KEY CHARACTERISTIC.

2 PROTECTIVE CAP. REMOVE BEFORE USING TOOL.

MATERIAL SPECIFICATIONS

- 1 HANDLE: PLASTIC
- 2 INSERTION TOOL: CARBON TOOL STEEL PER QQ-3-00766

REV	DESCRIPTION	BY DATE	APPD
G	REVISED PER ECR-ER4169	09/21/07 CMB	VBH



CATALOG No. 107-1015

USED FOR MRAC & MRAC/EC CONNECTORS

PER ASME Y14.5M-1994 UNLESS OTHERWISE SPECIFIED: DIMENSIONS ARE IN INCHES [MM] TOLERANCES: DECIMAL: .XX [X.X] ± .01 [0.3] .XXX [X.XX] ± .005 [0.13] .XXXX [X.XXX] ± .XXXX ANGLES: ± 2° SCALE: 1:1				 Winchester Electronics Corporation 62 Barnes Industrial Road North Wallingford, Connecticut 06492	
CUSTOMER DRAWING				CONTACT INSERTION TOOL	
DRAWN	DATE	APPROVED	DATE	A	107-2
R.K.NYSLOP	12/15/58	D.MANTE	12/19/58		
APPROVED	DATE	APPROVED	DATE	SHT 1 OF 1	REV G
RRL	12/19/58	XXX	XX/XX/XX		