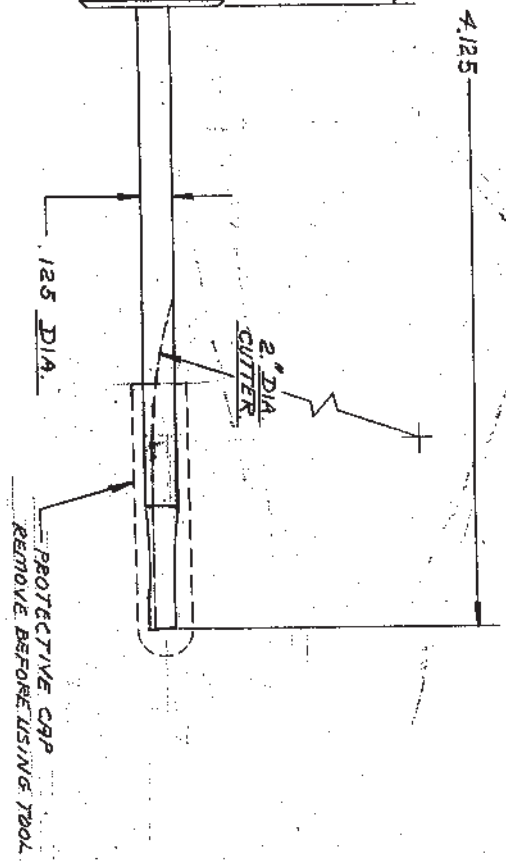
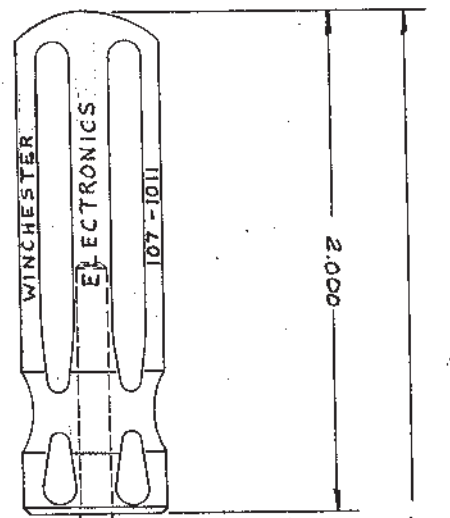
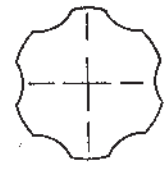


FORM 14 (REV. 11-70)

REV.	CHANGE	DATE
A	REVISED DWG. TO SHOW PARTS AS BEING PRODUCED S.O.P EN-14036	2-5-75 M.S. JW
B	ADDED PROT. CAP ECR 1276 EN 20708	7/24/75 JW

NOTE:
 CATALOG NO. & IDENT. MARKING
 WILL BE STAMPED ON HANDLES
 PER CUSTOMERS ORDER.



- GENERAL NOTES UNLESS OTHERWISE SPECIFIED
1. ALL DIMENSIONS ARE IN INCHES.
 2. ALL DIMENSIONS ARE IN INCHES.
 3. REMOVE ALL BURRS TO MAX.
 4. BREAK ALL SHARP EDGES EQ. TO R. MAX.
 5. R. MAX. ON INSIDE CORNERS.
 6. ALL DIAMETERS CONCENTRIC. TIR. MAX.
 7. ALL SURFACES TO BE SQUARE AND/OR PARALLEL WITHIN .001 IN./IN.
 8. GENERAL SURFACE FINISH TO BE MICROINCHES RMS. MAX.
 9. TOLERANCES: ±.010 AND ±.005 FRACTIONS AND ±.001 IN.
 10. WEIGHT

TITLE OUTLINE ASSEMBLY	
CONTACT INSERTION TOOL (SPEC)	
CAT. No. 107-1011	
SCALE 2 X 1	DR. T. DALEY DATE 7-9-65
WINCHESTER ELECTRONICS DIVISION OF LITTON PRECISION PRODUCTS INC. ORVILLE CONNECTICUT	APPROVED DATE 7-27-65
OWN. SIZE B	REV. B