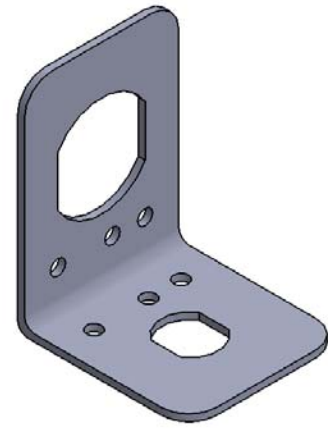
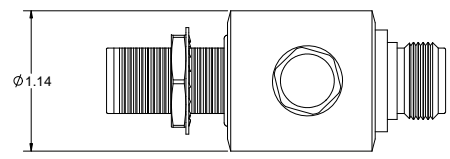
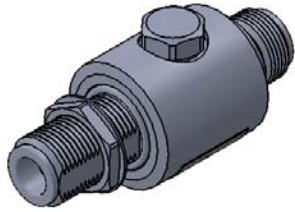


THIS DOCUMENT CONTAINS CONFIDENTIAL TECHNICAL DATA. IT INCLUDES TRADE SECRETS, PROPRIETARY INFORMATION, AND OTHER UNLAWFUL INFORMATION. THE DATA EXPRESSLY CONTAINED HEREON IS UNCLASSIFIED EXCEPT WHERE SHOWN OTHERWISE. ANY DISCLOSURE OF THIS INFORMATION TO ANY OTHER PERSON WITHOUT THE PRIOR WRITTEN CONSENT OF TIMES MICROWAVE SYSTEMS IS PROHIBITED.

REV.	REASON DESCRIPTION	QTRM	DATE	APPD.	DATE
A	RELEASED FOR PRODUCTION	M.E.	03/24/14	M.E.	03/24/14



NOTES:

1. ELECTRICAL PERFORMANCE

IMPEDANCE: 50 OHMS  
 OPERATING FREQUENCY: DC-3000 MHz  
 VSWR/RETURN LOSS: < 1.1:1 / < -26 dB (DC-2800 MHz)  
 < 1.13:1 / < -24 dB (2800-3000 MHz)  
 INSERTION LOSS: < 0.1 dB (DC-1000 MHz)  
 < 0.2 dB (1000-3000 MHz)  
 AVERAGE POWER: 210 W  
 MAX SURGE CURRENT: 20 kA MULTIPLE (8/20 us WAVE-FORM)  
 IMPULSE SPARKOVER: 700 V (1 kV/us)  
 TURN ON: 230 Vdc  
 PROTECTION CIRCUIT: DC PASS, BIDIRECTIONAL

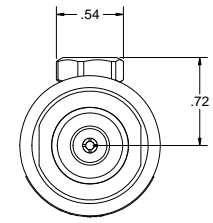
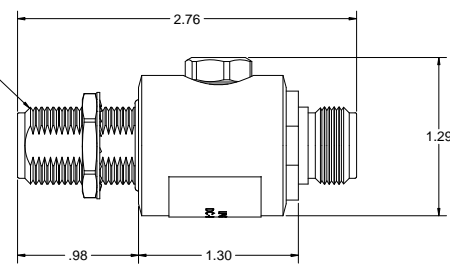
2. ENVIRONMENTAL CHARACTERISTICS

STORAGE/OPERATING TEMPERATURE: -40C TO +85C  
 WEATHERIZATION: IP67  
 VIBRATION: MIL-STD 202, METHOD 204, CONDITION B  
 RoHS COMPLIANT

3. MATERIAL AND FINISH

INNER CONNECTOR FEMALE: PHOSPHOR BRONZE, SILVER PLATE  
 BODY: BRASS, WHITE BRONZE PLATE  
 INSULATOR: TPX  
 COUPLING NUT: BRASS, WHITE BRONZE PLATE  
 O-RING: SILICONE RUBBER

2 X 5/8-24 UNEF-2A



MATERIAL:	
	USED ON ASSY.

DRAFTSMAN	M. ELLIS	03/24/14
CHECKER	M. ELLIS	03/24/14
APPROVED	M. ELLIS	03/24/14
UNLESS OTHERWISE SPECIFIED		
ALL DIMENSIONS ARE IN INCHES		
MACHINED SURFACES FINISH 32 RMS MAX.		
REMOVE ALL BURRS .005 MAX. BREAK		
MACHINE CORNERS .005 MAX. FILLET R.		
TOLERANCES ON DECIMALS	.XXX ± .005	
XX ± .01	FRACTIONS ± .012	
ANGLES ± °		
DO NOT SCALE DRAWING		

TIMES MICROWAVE SYSTEMS	
TITLE: SURGE PROTECTOR N FEMALE TO N FEMALE DC-3000 MHz	
DESIGN NO.	LP-GTR-NFF-23
REV.	A
SCALE	2:1
SHEET	1 OF 1