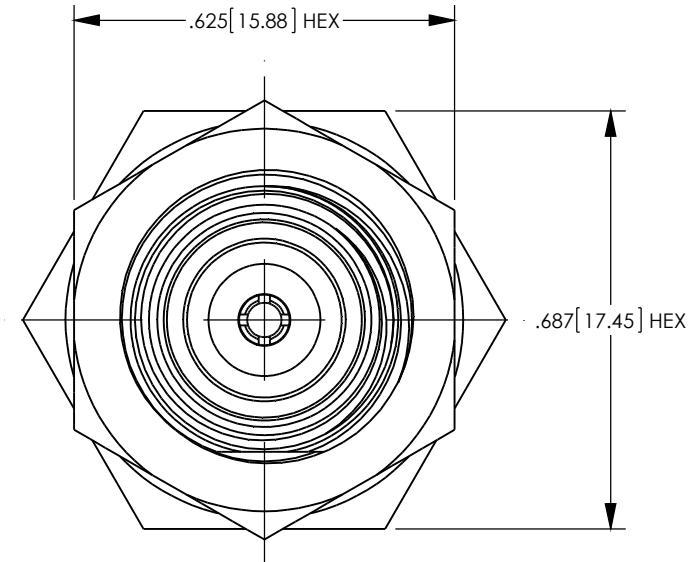
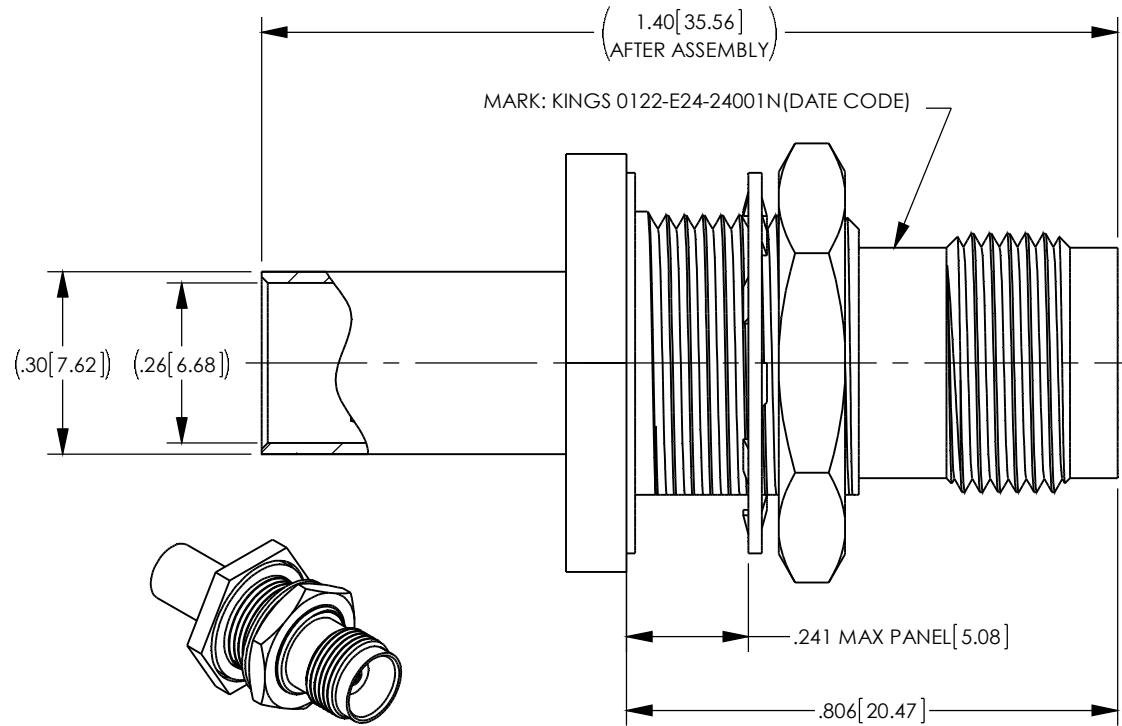
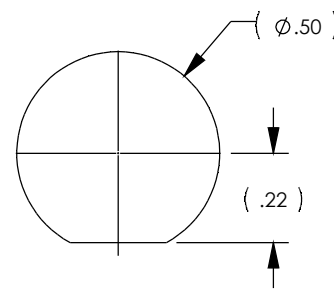


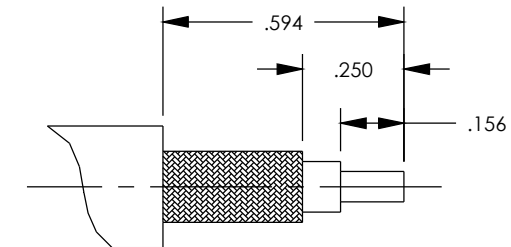
REV	DESCRIPTION	BY DATE	APPD
B	ER060261	DCAM 10/08/14	DCAM



- NOTES: UNLESS OTHERWISE SPECIFIED
- FOR USE WITH TIMES LMR240 & EQUIVALENT CABLES.
 - FOR CABLING INSTRUCTIONS SEE 3-782.
 - FOR CRIMPING USE DIE KTH-2029 (.255 HEX FERRULE, .069 HEX CONTACT)
 - INTERFACE PER MIL-STD-348, SERIES TNC, SOCKET CONTACT.
 - CENTER CONTACT CRIMP SLEEVE, NUT, LOCKWASHER & GASKET TO BE SHIPPED UNASSEMBLED.
 - MATERIALS:
INSULATOR: PTFE PER ASTM D1710
CENTER CONTACT: BERYLLIUM COPPER PER ASTM B196
GASKET: SILICONE RUBBER PER A-A-59588
LOCKWASHER: PHOSPHOR BRONZE PER B103
ALL OTHER METALS: BRASS PER ASTM B16
 - FINISHES:
CENTER CONTACT: .000050 MIN GOLD PLATE PER ASTM B488 OVER .000080 MIN NICKEL PER AMS-QQ-N-290 (RoHS)
ALL OTHER METALS: .000050 MIN NICKEL PER AMS-QQ-N-290 OVER .000050 MIN COPPER PER ASTM B734 (RoHS)
 - ELECTRICAL CHARACTERISTICS:
NOMINAL IMPEDANCE: 50 OHMS
WORKING VOLTAGE: 500 VRMS
FREQUENCY RANGE: DC TO 11 GHz
VSWR: 1.25 MAX, DC TO 6 GHz



MOUNTING HOLE



RECOMMENDED CABLE TRIM

CATALOG P/N: 0122-E24-24001N

PER ASME Y14.5M-1994 UNLESS OTHERWISE SPECIFIED: DIMENSIONS ARE IN INCHES [MM] TOLERANCES: DECIMAL: XX [X.X] ± .01 [0.3] .XXX [X.XX] ± .005 [0.13] .XXXX [X.XXX] ± .XXXX ANGLES: ± 2° SCALE: 3:1			
CUSTOMER SALES DRAWING		THIRD ANGLE	
DRAWN	DATE	APPROVED	DATE
KPL	03/26/2013	DCAM	3/25/13
APPROVED	DATE	APPROVED	DATE
VB	3/25/13	MS	3/25/13

KINGS
by WINCHESTER ELECTRONICS
Winchester Electronics Corporation
199 Park Road Ext Suite 104
Middlebury, Connecticut 06762

TNC BULKHEAD JACK-CRIMP ATTACHMENT (RoHS)

A	SD0122-E24-24001N	SHT	OF	REV
		1	1	B