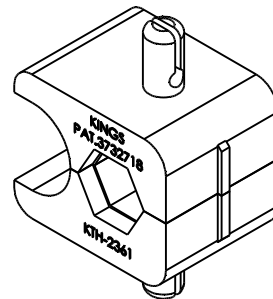
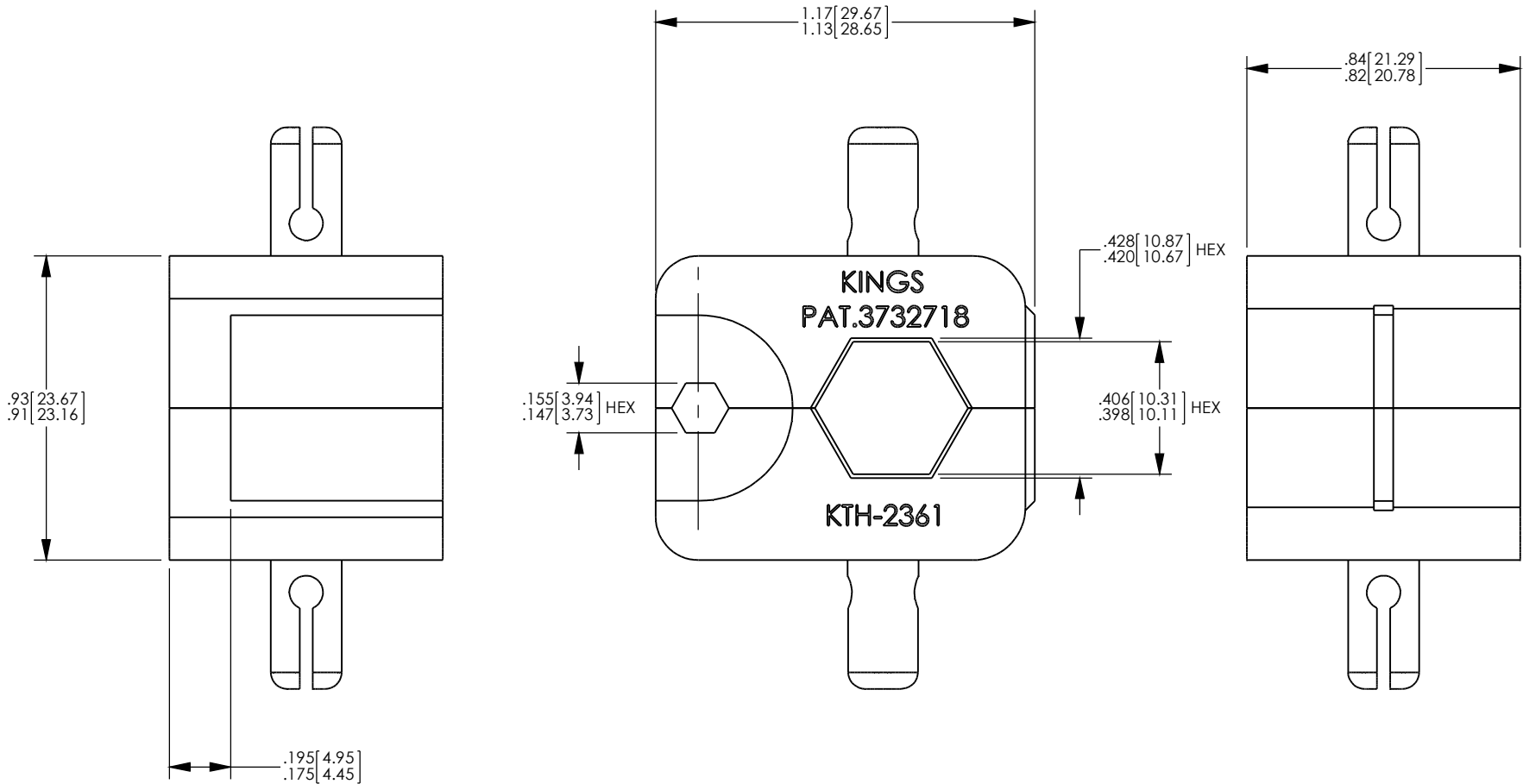


NOTES: UNLESS OTHERWISE SPECIFIED
 1. FOR USE WITH GORE GSC-14-83804-02 CABLE.
 2. FINISH: BLACK OXIDE

REV	DESCRIPTION	BY DATE	APPD
A	ER053674	DCam 6/10/14	DCAM



CATALOG P/N: KTH-2361

PER ASME Y14.5M-1994 UNLESS OTHERWISE SPECIFIED: DIMENSIONS ARE IN INCHES [MM] TOLERANCES: DECIMAL: .XX [X.X] ± .01 [0.3] .XXX [X.XX] ± .005 [0.13] .XXXX [X.XXX] ± .XXXX				 by WINCHESTER Winchester Electronics Corporation ELECTRONICS 62 Barnes Industrial Road North Wallingford, Connecticut 06492				
ANGLS: ± 2° SCALE: 2:1				THIRD ANGLE				
CUSTOMER SALES DRAWING				CRIMP DIE				
DRAWN	DATE	APPROVED	DATE	DRAWN	DATE	APPROVED	DATE	
DCam	06/10/2014	DCAM	06/10/14	DCam	06/10/14	DCAM	06/10/14	
APPROVED	DATE	APPROVED	DATE	APPROVED	DATE	APPROVED	DATE	
XXX	XX/XX/XX	XXX	XX/XX/XX	XXX	XX/XX/XX	XXX	XX/XX/XX	
A				SDKTH-2361		SHT 1	OF 1	REV A