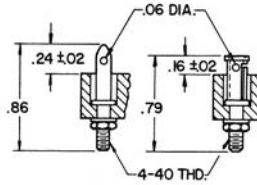
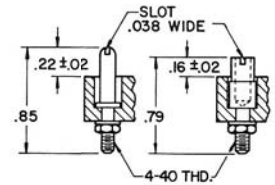


SERIES 145-100

double lead guides and screwlocks



GUIDE PIN FOR NON-SCREWLOCK CONNECTOR
FIG. 1
MATERIAL: GOLD PLATED BRASS



GUIDE SOCKET FOR SCREWLOCK CONNECTOR
FIG. 3
MATERIAL: NICKEL PLATED BRASS

GUIDE SOCKET FOR NON-SCREWLOCK CONNECTOR
FIG. 2
MATERIAL: GOLD PLATED PHOSPHOR BRONZE



FIG. 1



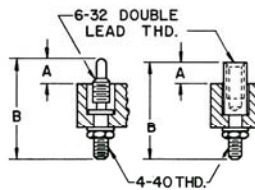
FIG. 2



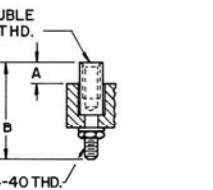
FIG. 3



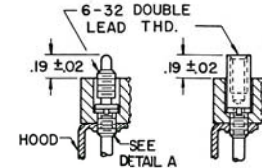
FIG. 4



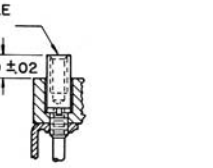
NON-ROTATING MALE SCREWLOCK
FIG. 5



NON-ROTATING FEMALE SCREWLOCK
FIG. 6



ROTATING MALE SCREWLOCK
FIG. 7



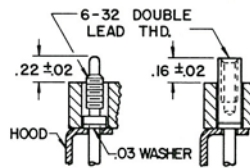
ROTATING FEMALE SCREWLOCK
FIG. 8



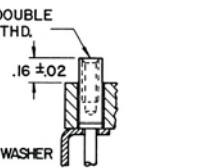
FIG. 5



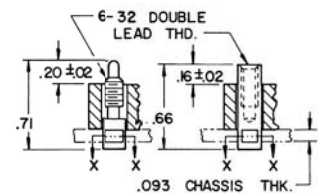
FIG. 6



ROTATING MALE SCREWLOCK
FIG. 9



ROTATING FEMALE SCREWLOCK
FIG. 10



NON-ROTATING MALE SCREWLOCK
FIG. 11

NON-ROTATING FEMALE SCREWLOCK
FIG. 12



FIG. 7



FIG. 8



FIG. 9

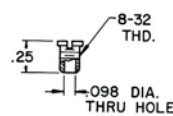


FIG. 10



SECTION X-X

DETAIL A — BUSHING



USED TO MOUNT CONNECTORS TO HOOD FOR SCREWLOCK ON 14, 18, 20 AND 21 CONTACT CONFIGURATIONS (SEE FIG. 7 and 8, ALSO ILLUSTRATION ON PAGE 38).



FIG. 11



FIG. 12



BUSHING DETAIL A

ACTUAL SIZE

NOTES

1. Body Material: Diallyl Phthalate, Glass fiber filled Type GDI-30 per MIL-P-19833.
2. Pin Contact: Gold plated brass.
3. Socket Contact: Gold plated phosphor bronze.
4. Guide (Fig. 1): Gold plated brass.
5. Guide (Fig. 2): Gold plated phosphor bronze.
6. Guides (Figs. 3 & 4): Nickel plated brass.
7. Screwlocks: Passivated stainless steel.