

Bulkhead Jack Receptacles

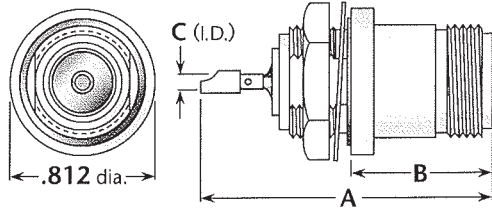


Figure 1
(Front mount, hermetically sealed, with mounting gasket)

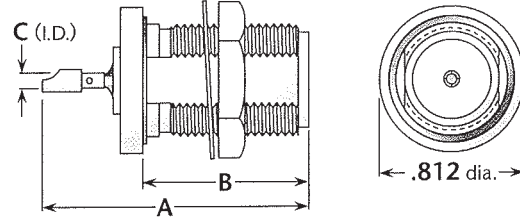


Figure 2
(Rear mount, hermetically sealed, with mounting gasket)

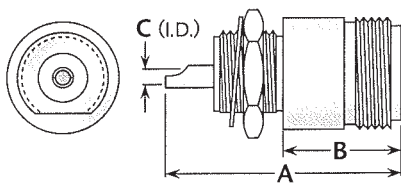


Figure 3
(Front mount, no gasket)

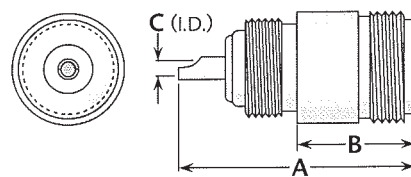


Figure 4
(Front mount, no gasket, screw-in type for 9/16-24 tapped hole)

Figure	Dimensions			Max. Panel	Mounting Figure	Plating		Delta P/N
	A	B	C			Body	Contact	
1	1.62	.707	.099	.100	72	Nickel	Silver (C)	UG-680/U
1	1.62	.707	.099	.100	72	Nickel	Silver (C)	UG-680A/U
1	1.62	.707	.099	.100	72	Silver	Gold (C)	M39012/04-0001
2	1.53	.919	.099	.250	72	Nickel	Silver (C)	1121-000-N728-5
3	1.25	.606	.099	.100	59	Nickel	Silver (C)	1120-000-N590
3	1.25	.606	.099	.100	59	Nickel	Gold (C)	1120-000-N590-4
4	1.12	.562	.099	.100	**	Nickel	Silver (C)	1120-000-N591

Stripline Receptacles

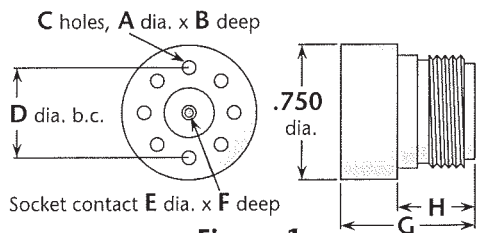


Figure 1

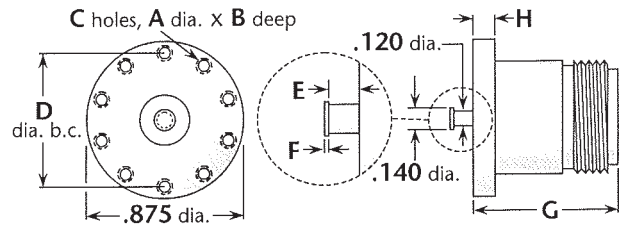


Figure 2

Figure	Dimensions								Plating		Delta P/N
	A	B	C	D	E	F	G	H	Body	Contact	
1	#2-56	.250	7	.560	#0-80	.125	.734	.422	Nickel	Silver	1156-000-N000
1	.078	.313	7	.500	.063	.156	.734	.656	Nickel	Silver	1156-000-N000-2
1	#2-56	.250	7	.560	#2-56	.125	.734	.422	Nickel	Silver	1156-000-N000-3
2	#2-56	.125	10	.734	.125	.010	.816	.125	Nickel	Silver	1157-000-N000-3

(C) in contact plating column indicates captive contact. • See page 6 for alternate body plating information.
See page 203 for mounting dimensions. • All items are available with other flange sizes and contact configurations.