

Bulkhead Jack—Heli-Grip® for Flexible Cable

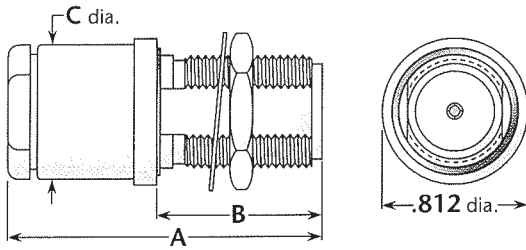


Figure 1

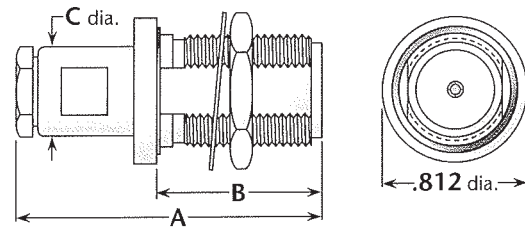
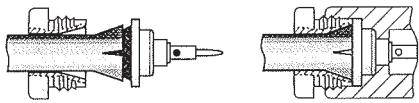


Figure 2

Heli-Grip® Cable Attachment



These connectors have captivated contacts and allow rapid, easy assembly—simply trim the cable, slide into the cone/insulator/contact assembly (left), solder the center conductor to the contact, and screw body assembly (right) onto cable assembly.

Cable Group	Fig.	Dimensions			Mounting Figure	Max. Panel	Plating		Delta P/N	Assembly Procedure/Trim Code
		A	B	C			Body	Contact		
2, 3	1	1.84	.92	.75	72	.25	Nickel	Gold (C)	1116-004-N725	E/01
5, 6 ^s	2	1.69	.92	.50	72	.25	Nickel	Gold (C)	1116-015-N725	E/03
RG-223	2	1.69	.92	.50	72	.25	Nickel	Gold (C)	1116-015-N725-1	E/03
7	2	1.69	.92	.50	72	.25	Nickel	Gold (C)	1116-021-N725	E/03
10	2	1.69	.92	.50	72	.25	Nickel	Gold (C)	1116-100-N725	E/03

^sExcept RG-223/U.

Tee Bulkhead Jack—For Flexible and Semi-Rigid Cable

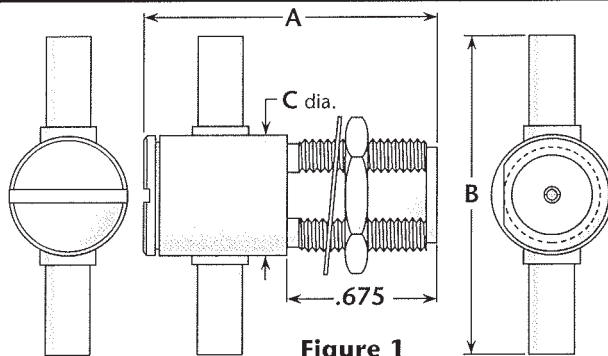


Figure 1
(Crimp type for flexible cable)

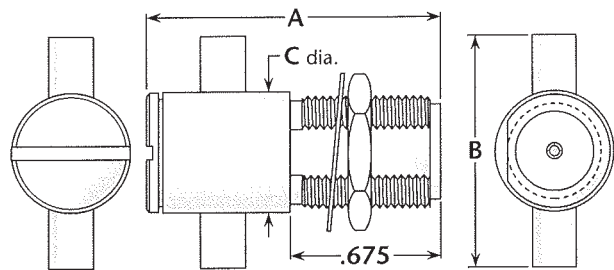


Figure 2
(Direct solder for semi-rigid cable)

Cable Group	Fig.	Dimensions			Mounting Figure	Max. Panel	Plating		Delta P/N	Assembly Procedure/Trim Code
		A	B	C			Body	Contact		
2	1	1.40	2.00	.75	55	.10	Silver	Silver (C)	1185-002-A551	B/16
3	1	1.40	2.00	.75	55	.10	Silver	Silver (C)	1185-004-A551	B/16
6	1	1.38	1.89	.75	55	.10	Silver	Silver (C)	1185-013-A551	B/17
7	1	1.38	1.89	.75	55	.10	Silver	Silver (C)	1185-019-A551	B/17
9	1	1.38	1.89	.75	55	.10	Silver	Silver (C)	1185-036-A551	B/17
13	2	1.38	.90	.75	55	.10	Silver	Silver (C)	1185-031-A551	***

See page 204 for cable groups. • Assembly procedures start on page 205.

*** Contact factory for cable assembly instructions. • See page 203 for mounting dimensions.
(C) in contact plating column indicates captive contact. • See page 6 for alternate body plating information.