

Bulkhead Jack—Military Clamp for Flexible Cable

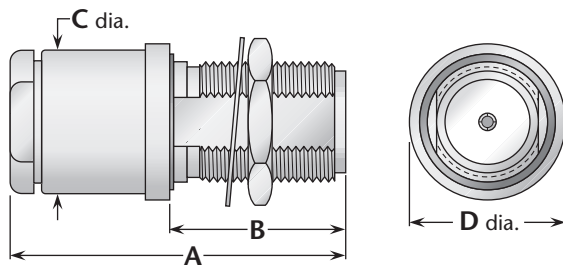


Figure 1
(Rear mount)

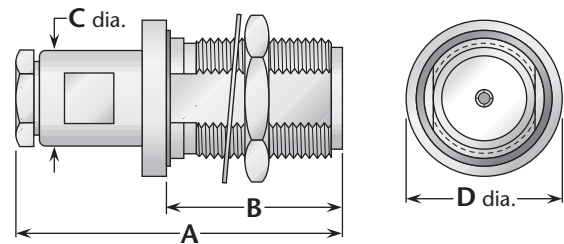
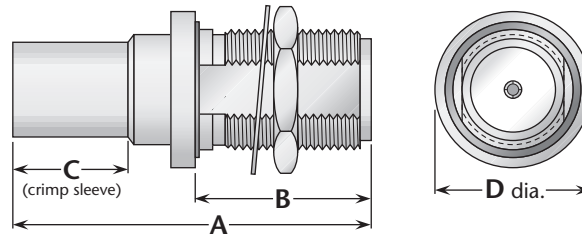


Figure 2
(Rear mount)

Cable Group	Fig.	Dimensions				Mounting Figure	Max. Panel	Plating		Delta P/N	Assembly Procedure/Trim Code
		A	B	C	D			Body	Contact		
1	1	1.75	.92	.75	.900	72	.25	Silver	Gold (C)	M39012/03-0101	A/01
2, 3	1	1.75	.92	.75	.875	72	.25	Nickel	Silver	UG-160D/U	A/01
2, 3	1	1.84	.92	.75	.812	72	.25	Nickel	Silver (C)	1116-003-N721	***
2, 3	1	1.75	.92	.75	.875	72	.25	Nickel	Gold	1116-004-N720-1	A/01
5, 6	2	1.67	.92	.50	.812	72	.25	Nickel	Silver	UG-556B/U	A/06
5, 6	2	1.67	.92	.50	.875	72	.25	Nickel	Gold (C)	1116-015-N721	A/02
7	2	1.47	.92	.50	.875	72	.25	Nickel	Silver	1116-021-N720	A/14
7	2	1.47	.92	.50	.875	72	.25	Nickel	Gold (C)	1116-021-N721	A/14
9	2	1.48	.92	.50	.875	72	.25	Nickel	Silver (C)	1116-036-N721	A/10
10	2	1.48	.92	.50	.875	72	.25	Nickel	Silver (C)	1116-100-N721	A/10
11	2	1.48	.92	.50	.875	72	.25	Nickel	Silver (C)	1116-038-N721	A/10
16	1	1.90	.92	.88	.875	72	.25	Silver	Gold (C)	M39012/03-0102	A/01

Bulkhead Jack—Crimp Type for Flexible Cable

Figure 1
(Rear mount)



Cable Group	Fig.	Dimensions				Mounting Figure	Max. Panel	Plating		Delta P/N	Assembly Procedure/Trim Code
		A	B	C	D			Body	Contact		
2	1	1.84	.92	.60	.875	72	.25	Silver	Gold (C)	M39012/03B0004	B/03
2	1	1.84	.92	.60	.875	72	.25	Silver	Gold (C)	M39012/03-0502	B/03
3	1	1.84	.92	.60	.875	72	.25	Silver	Gold (C)	M39012/03B0005	B/03
3	1	1.84	.92	.60	.875	72	.25	Silver	Gold (C)	M39012/03-0501	B/03
6	1	1.74	.95	.50	.875	72	.25	Nickel	Gold (C)	1119-013-N721	B/13
6	1	1.74	.92	.50	.875	72	.25	Silver	Gold (C)	M39012/03-0503	B/03
7	1	1.59	.92	.50	.812	72	.25	Nickel	Silver	1119-020-N720	B/14
9	1	1.45	.88	.44	.812	72	.25	Nickel	Silver (C)	1119-036-N721	B/15
10	1	1.45	.88	.44	.812	72	.25	Nickel	Gold (C)	1119-100-N721	B/15

See page 204 for cable groups. • Assembly procedures start on page 205. • ***Contact factory for cable assembly instructions
See page 203 for mounting dimensions. • (C) in contact plating column indicates captive contact.
See page 6 for alternate body plating information.