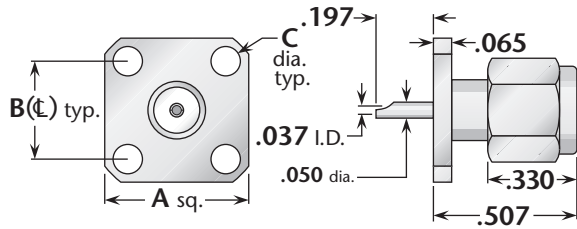
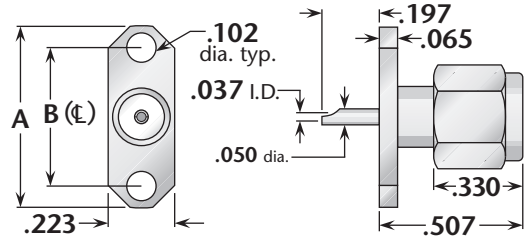


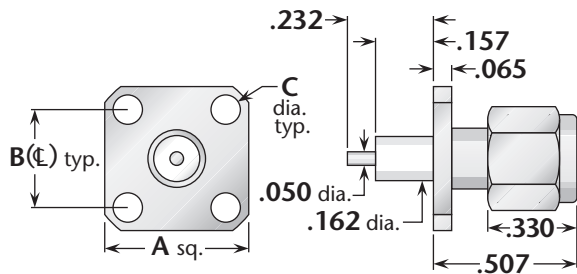
## Panel Plug Receptacles



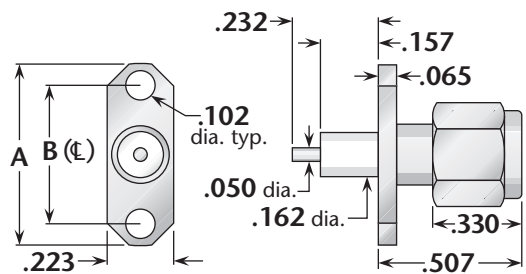
**Figure 1**  
(Solder pot contact—square flange)



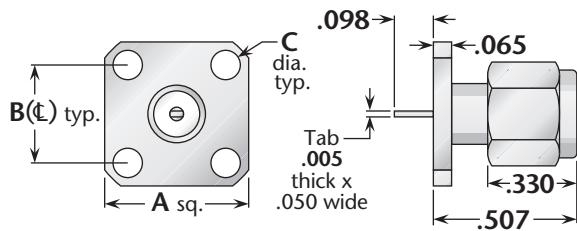
**Figure 2**  
(Solder pot contact—2-hole flange)



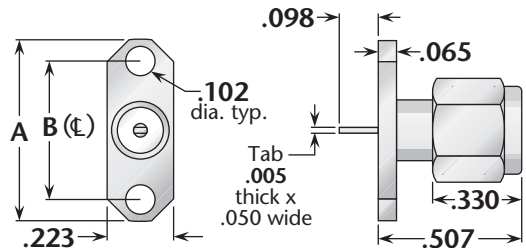
**Figure 3**  
(Post contact—square flange)



**Figure 4**  
(Post contact—2-hole flange)



**Figure 5**  
(Tab contact—square flange)



**Figure 6**  
(Tab contact—2-hole flange)

Figure	Dimensions			Mounting Figure	Plating		Delta P/N
	A	B	C		Body	Contact	
1	.500	.340	.102	05	Gold*	Gold (C)	1323-000-G051-500
2	.625	.481	.102	92	Gold*	Gold (C)	1323-000-G921-500
3	.500	.340	.102	05	Gold*	Gold (C)	1359-000-G051-500
4	.625	.481	.102	92	Gold*	Gold (C)	1359-000-G921-500
5	.500	.340	.102	05	Gold*	Gold (C)	1359-000-G051-501
6	.625	.481	.102	92	Gold*	Gold (C)	1359-000-G921-501

\* Also available with nickel-plated body—change G in Delta part number to N.  
See page 203 for mounting dimensions. • (C) in contact plating column indicates captive contact (mechanical captivation).  
All items available with other flange, contact, and insulator configurations.