

Panel Jack Receptacle—Post Contact (For Microstrip)

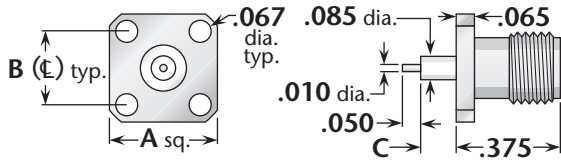


Figure 1
(3/8" square flange)

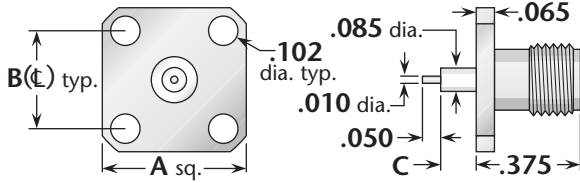


Figure 2
(1/2" square flange, SMA standard flange size)

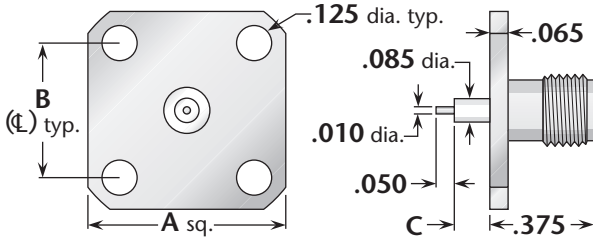


Figure 3
(11/16" square flange, interchangeable with BNC and TNC standard flange size)

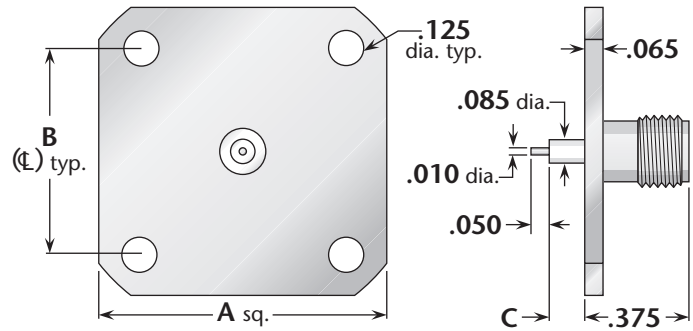


Figure 4
(1" square flange, interchangeable with type N standard flange size)

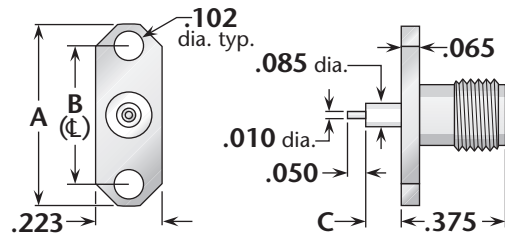


Figure 5
(2-hole flange)

Figure	Dimensions			Mounting Figure	Plating		Delta P/N
	A	B	C		Body	Contact	
1	.375	.250	.057	91	Gold	Gold (C)	1358-000-G911-14
1	.375	.250	.057	91	Passivated	Gold (C)	1358-000-K911-14
1	.375	.250	.125	91	Gold	Gold (C)	1358-000-G911-85
1	.375	.250	.125	91	Passivated	Gold (C)	1358-000-K911-85
2	.500	.340	.057	05	Gold	Gold (C)	1358-000-G051-19
2	.500	.340	.057	05	Passivated	Gold (C)	1358-000-K051-19
2	.500	.340	.125	05	Gold	Gold (C)	1358-000-G051-128
2	.500	.340	.125	05	Passivated	Gold (C)	1358-000-K051-128
3	.687	.500	.057	09	Gold	Gold (C)	1358-000-G091-15
3	.687	.500	.057	09	Passivated	Gold (C)	1358-000-K091-15
3	.687	.500	.125	09	Gold	Gold (C)	1358-000-G091-16
3	.687	.500	.125	09	Passivated	Gold (C)	1358-000-K091-16
4	1.00	.718	.057	33	Gold	Gold (C)	1358-000-G331-4
4	1.00	.718	.057	33	Passivated	Gold (C)	1358-000-K331-4
4	1.00	.718	.125	33	Gold	Gold (C)	1358-000-G331-5
4	1.00	.718	.125	33	Passivated	Gold (C)	1358-000-K331-5
5	.625	.481	.057	92	Gold	Gold (C)	1358-000-G051-35
5	.625	.481	.057	92	Passivated	Gold (C)	1358-000-K051-35
5	.625	.481	.125	92	Gold	Gold (C)	1358-000-G051-34
5	.625	.481	.125	92	Passivated	Gold (C)	1358-000-K051-34

See page 203 for mounting dimensions. • (C) in contact plating column indicates captive contact (epoxy captivated).
All items available with other flange, contact, and insulator configurations.