

Dummy Receptacle

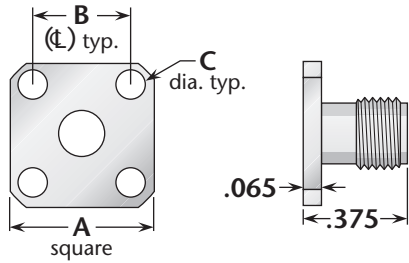


Figure 1
(1/2" square flange)

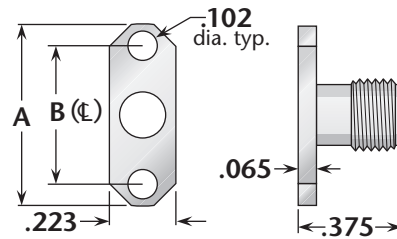


Figure 2
(2-hole flange)

Figure	Dimensions			Mounting Figure	Plating		Delta P/N
	A	B	C		Body	Contact	
1	.500	.340	.102	05	Gold	—	1363-000-G050-1
1	.500	.340	.102	05	Passivated	—	1363-000-K050-2
2	.625	.481	.102	92	Gold	—	1363-000-G920
2	.625	.481	.102	92	Passivated	—	1363-000-K920

Dust Caps

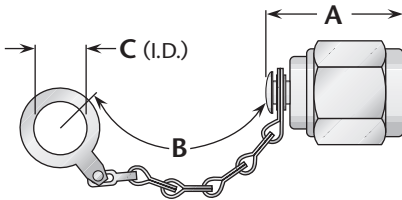


Figure 1
(Shown with safety chain)

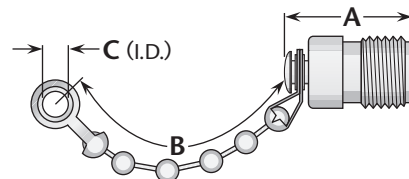


Figure 2
(Shown with bead chain)

See page 194 for MIL-PRF-39012 QPL versions.

Figure	Dimensions			Features	Plating		Delta P/N
	A	B	C		Body	Contact	
1	.50	2.25	.144	Bead chain	Gold	—	1332-000-G000
1	.50	2.25	.144	Bead chain	Passivated	—	1332-000-K000
1	.275	—	—	No chain	Passivated	—	1332-000-K00A-1
1	.50	3.25	.281	Safety chain	Passivated	—	1332-000-K00B-3
1	.330	—	—	No chain / shorting type	Passivated	Passivated	1332-000-K00C
2	.50	2.25	.144	Bead chain	Gold	—	1333-000-G000
2	.50	2.25	.144	Bead chain	Passivated	—	1333-000-K000
2	.390	—	—	No chain	Passivated	—	1333-000-K00A

See page 203 for mounting dimensions. • Dust caps are available with other chain styles and lengths.